

PRODUCT INFORMATION PACKET

Model No: 5K49MN8349

Catalog No: K2107

0.75 HP Explosion Proof Motor, 3 phase, 1200 RPM, 208-230/460 V, 145T Frame, EPFC
Explosion Proof NEMA Motors



Regal and Marathon are trademarks of Regal Beloit Corporation or one of its affiliated companies.
©2020 Regal Beloit Corporation, All Rights Reserved. MC017097E

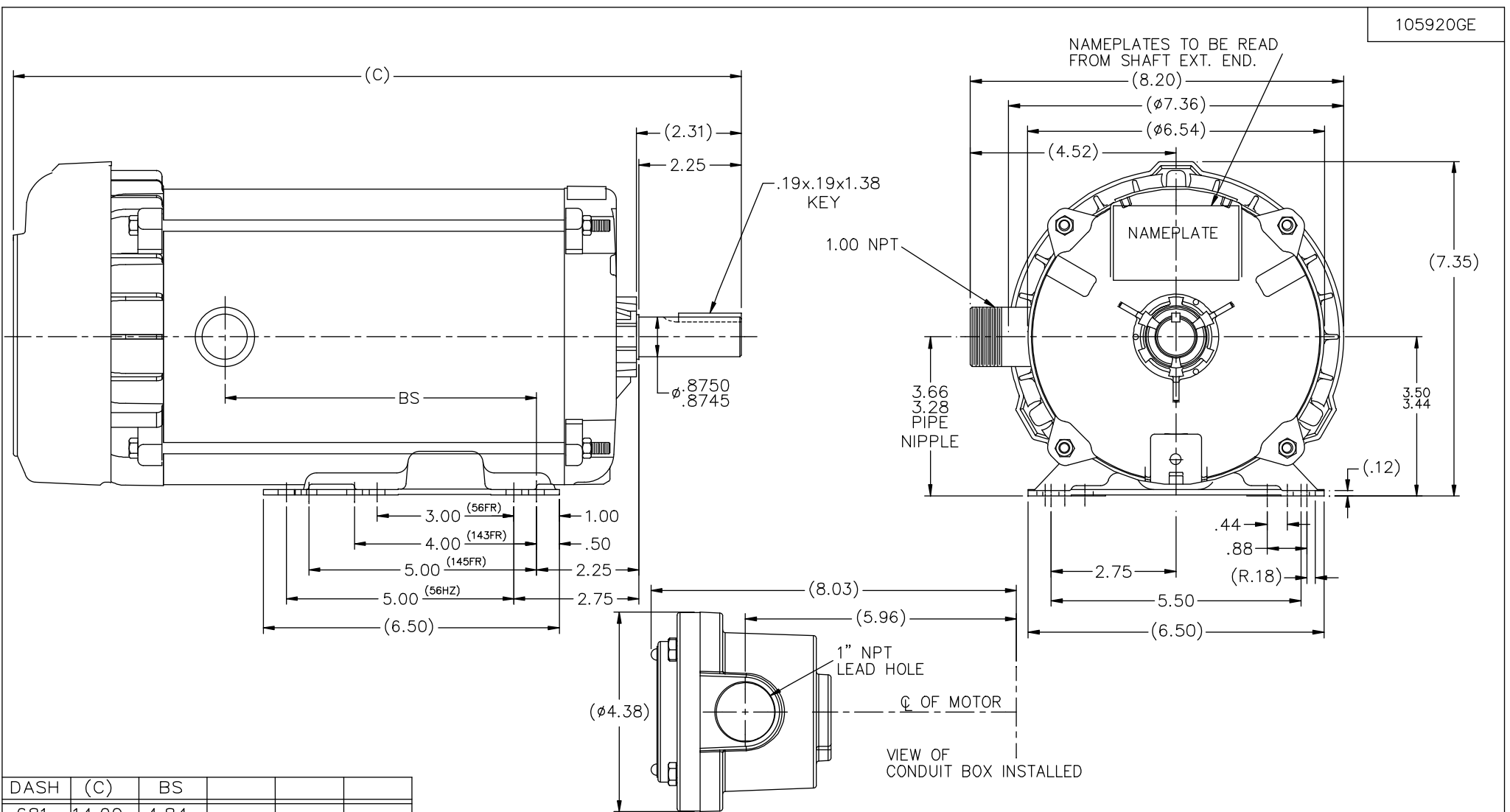
REGAL

Nameplate Specifications

Output HP	0.75 Hp	Output KW	0.56 kW
Frequency	60 Hz	Voltage	208-230/460 V
Current	3.2-3.2/1.6 A	Speed	1145 rpm
Service Factor	1	Phase	3
Efficiency	74 %	Power Factor	59.1
Duty	Continuous	Insulation Class	B
Design Code	B	KVA Code	K
Frame	143T	Enclosure	Explosion Proof Fan cooled
Thermal Protection	Automatic	Ambient Temperature	40 °C
Drive End Bearing Size	6205	Opp Drive End Bearing Size	6203
UL	UL Listed And CSA Certified	CSA	Y
CE	N	IP Code	54
Hazardous Location	EXP PROOF CL I GR C&D CL II GR F&G T3B		

Technical Specifications

Electrical Type	Squirrel Cage Induction Run	Starting Method	Across The Line
Poles	6	Rotation	Reversible
Resistance Main	6.3 Ohms	Mounting	Rigid base
Motor Orientation	Horizontal	Drive End Bearing	Ball
Opp Drive End Bearing	Ball	Frame Material	Rolled Steel
Shaft Type	T	Overall Length	14.00 in
Frame Length	6.81 in	Shaft Diameter	0.875 in
Shaft Extension	2.31 in	Assembly/Box Mounting	F1 ONLY
Connection Drawing	A-EE7335-GE	Outline Drawing	B-105920GE-681



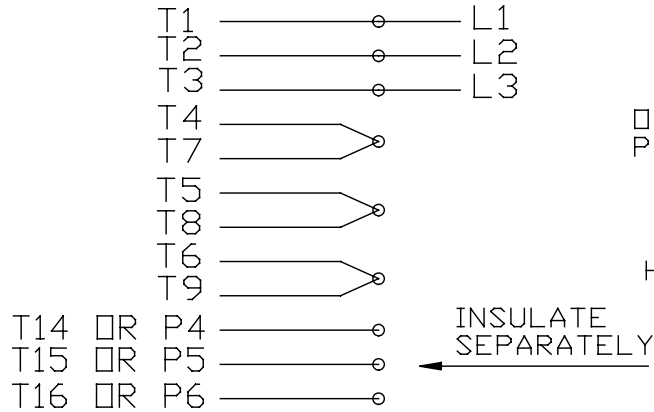
DASH	(C)	BS			
681	14.00	4.84			
731	14.50	5.34			
781	15.00	5.84			
831	15.50	6.34			
881	16.00	6.84	SHOWN		
931	16.50	7.34			
981	17.00	7.84			

NO.	REVISION	BY & DATE	CHK	ANG	FINISH		
6	COND. BOX INSTALLED VIEW UPDATED PER ECR-0044571	UD 10/17/13	ST		TOLERANCES UNLESS SPECIFIED		
5	REVISED C'BOX PER CN 40784A	JJB 02/26/2007	ML	DEC.	INCHES		
4	CHANGED LOGO TO REGAL BELOIT	TAT 09-07-2005	ML	.X	±.1		
3	REMOVED -6.31 FROM CHART, SHOWED CORRECT DE	MJK 05/23/2005		.XX	±.03	TITLE OUTLINE	140 FR. - EXP. PR. - TEFC - 1ø & 3ø
	BRACKET. CN 46098			.XXX	±.005	MAT'L.	
2	REVISED BA TO NEMA STD. CN46083	RJW 05-13-2005	ML	.XXXX	±.0005		
				ANG	±7'30"		
THIS DRAWING IN DESIGN AND DETAIL IS OUR PROPERTY AND MUST NOT BE USED EXCEPT IN CONNECTION WITH OUR WORK ALL RIGHTS OF DESIGN AND INVENTION ARE RESERVED THIS IS AN ELECTRONICALLY GENERATED DOCUMENT - DO NOT SCALE THIS PRINT						RFP	CAD FILE 105920ge
						DIST	WP
						SIZE	DRAWING NO. PAGE OF REV.
						B	105920GE 6

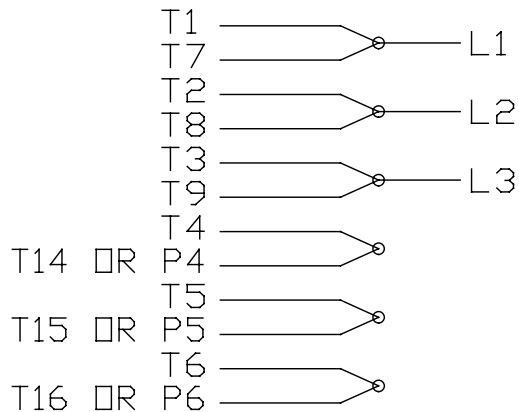


EE7335

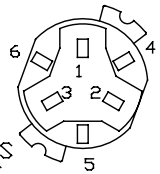
HIGH VOLTAGE CONNECTIONS



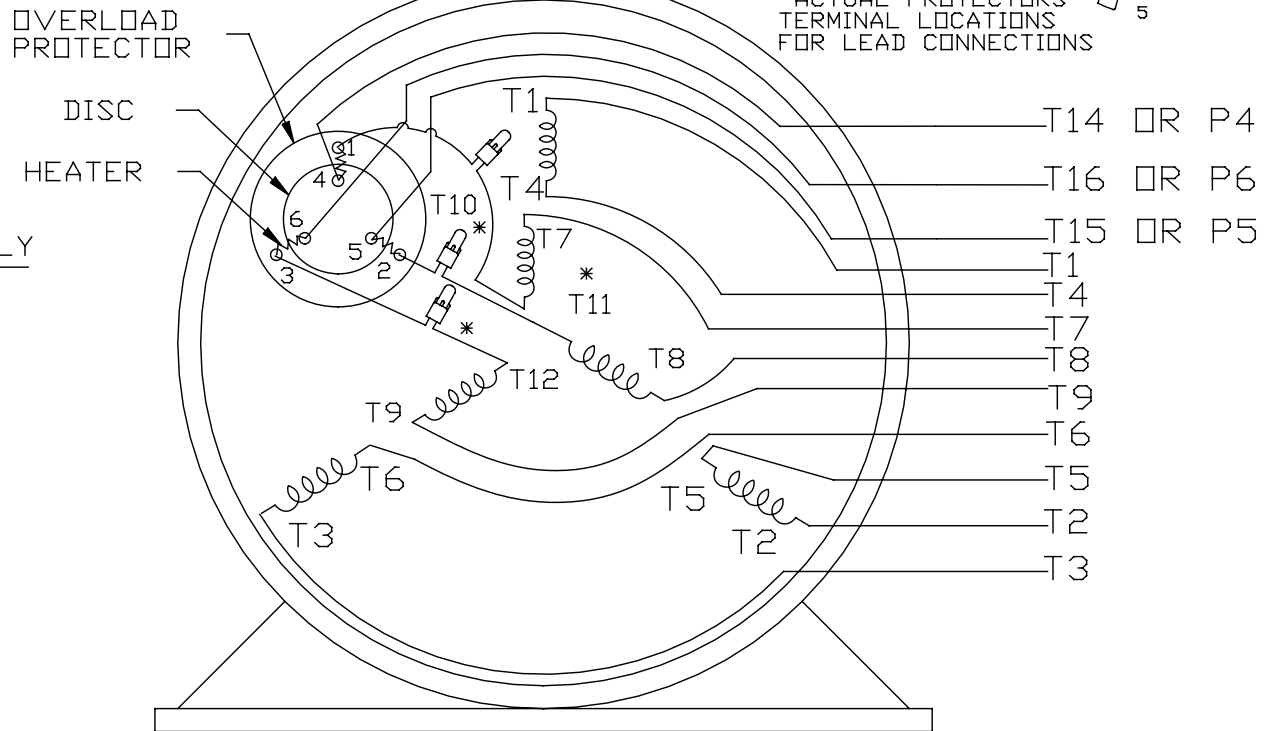
LOW VOLTAGE CONNECTIONS



THREE PHASE - DUAL VOLTAGE MOTOR WITH OVERLOAD PROTECTOR



NOTE:
ACTUAL PROTECTORS
TERMINAL LOCATIONS
FOR LEAD CONNECTIONS



VIEW OF TERMINAL END

* USE PRESSURE CONNECTORS FOR MT2 PLANT ONLY

T2K
T4D
T6AN

NO.	REVISION	BY & DATE	CHK	TOLERANCES UNLESS SPECIFIED		FINISH	DRAWING NO.	REV.		
				DEC.	INCHES					
17	CHANGED LOGO FROM MARATHON TO REGAL	KIR 02/16/16	AB	DEC.	INCHES	Regal Beloit America, Inc.	DRAWN	KL 08-09-1993		
16	PRESSURE CONNECTORS QUANTITY WAS 6	PVR 10/29/13	GR	.X	±.1		CHK	ML 08/10/1993		
15	PRESSURE CONNECTORS ADDED	GR 03/04/13	SR	.XX	±.01	TITLE 3Ø-DUAL VOLT WITH OVERLOAD PROTECT	APPD	GK 08/10/1993		
14	ADDED ACTUAL PROECTOR VIEW CN 17481	KL 05/18/94		.XXX	±.005		SCALE	1=1		
13	REDRAWN IN AUTO CAD	KL 08/11/93		.XXXX	±.0005	MAT'L.	REF			
					±1/2*		FMF			
							PREV			
THIS DRAWING IN DESIGN AND DETAIL IS OUR PROPERTY AND MUST NOT BE USED EXCEPT IN CONNECTION WITH OUR WORK ALL RIGHTS OF DESIGN AND INVENTION ARE RESERVED THIS IS AN ELECTRONICALLY GENERATED DOCUMENT - DO NOT SCALE THIS PRINT				RFP	CAD FILE	EE7335	SIZE	A	EE7335	17
				DIST						

Data Sheet

Date: 11/27/2018

5K49M1N8349

Customer:
 Attention:
 Submitted by: FAREEDA DUDEKULA



Submittal
 Data @ 460 V

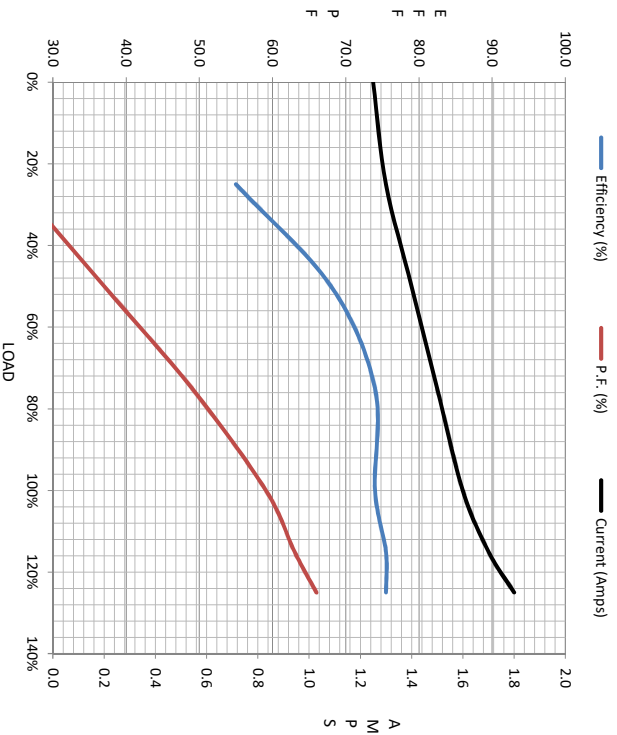
Load	0%	25%	50%	75%	100%	115%	125%	LR
Current (Amps)	1.25	1.30	1.40	1.50	1.60	1.70	1.80	8.5
Torque (ft-lb)	0.00	0.84	1.70	2.50	3.4	4.0	4.6	8.8
RPM	1200	1190	1180	1165	1145	1,140	1135	0
Efficiency (%)		55.0	68.0	74.0	74.0	75.5	75.5	
P.F. (%)		25.0	37.0	49.0	59.1	63.0	66.0	68.0

Motor Speed Data

	LR	Pull-Up	BD	Rated	Idle
Speed (RPM)	0	600	1050	1145	1200
Current (Amps)	8.5	7.7	6.0	1.60	1.25
Torque (ft-lb)	8.8	7.9	12.5	3.4	0.00

Information Block

HP	0.8			
Sync. RPM	1200			
Frame	145			
Enclosure	EPFC			
Construction	TGR			
Voltage	208-230/460 V			
Frequency	60 Hz			
Design	B			
LR Code Letter	K			
Service Factor	1			
Temp Rise @ FL	65 °C			
Duty	CONT			
Ambient	40 °C			
Elevation	1,000 feet			
Rotor/Shaft wk²	0.06 Lb-Ft²			
Ref Wdg	ZT607 FR			
Sound Pressure @ 1M	62 DBA			
VFD Rating	NONE			
Outline Dwg	B-105920GE-681			
Conn. Diag	A-EE7335-GE			
Additional Specifications:	0			
	0			
R1	R2	X1	X2	Xm
16.2540	10.9620	18.4460	19.0890	207.9000



Speed -Torque Curve

